

TUBE CLAMP

PRODUCT DESCRIPTION

Stainless Steel Tubing Clamps have been designed to provide to either two-directional (lateral) or three-directional (lateral and longitudinal) support of one or two tubes.

Standard tubing clamps are available in Type 304 stainless steel in the following tube size 3/8", 1/2", 3/4" .

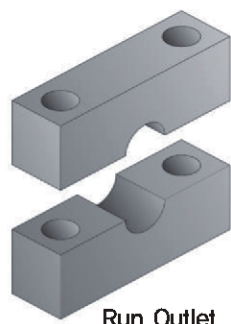
Clamp for tubes up to 1/2" – diameter can be mounted on 2" X 2" angle sections.

Clamp for tube larger than 1/2"- diameter can be mounted on 4" X 4" angle sections or other sections of comparable size.

NUCLEAR APPLICATIONS

For application in the Nuclear Power industry, these clamps are manufactured under a strict Quality Assurance Program.

These clamps have been designed to meet the requirements of the KEPIC MN, MNF & ASME Section III DIVISION 1, Subsection NF. Clamps can be supplied with Certificates of Compliance with regard to the clamp material.



Run Outlet

KWH1 (ONE TUBE)



KWH2 (TWO TUBE)

CLAMPING MODE	PART NO.	TUBE DIAMETER	Bolt / Nut
TWO DIRECTIONAL	KWH1-2D-3E	3/8" (9.52MM)	1/4"-20UNC
	KWH2-2D-3E		
	KWH1-2D-1H	1/2" (12.7MM)	
	KWH2-2D-1H		
	KWH1-2D-3Q	3/4" (19.05MM)	
	KWH2-2D-3Q		
THREE DIRECTIONAL	KWH1-3D-3E	3/8" (9.52MM)	1/4"-20UNC
	KWH2-3D-3E		
	KWH1-3D-1H	1/2" (12.7MM)	
	KWH2-3D-1H		
	KWH1-3D-3Q	3/4" (19.05MM)	
	KWH2-3D-3Q		